

OFFICIAL PROGRAMME 4d.



F.A. CHALLENGE CUP WINNERS — 1900 and 1903
SECOND DIVISION CHAMPIONS — 1894-95
RUNNERS-UP — 1923-24
THIRD DIVISION CHAMPIONS — 1960-61

Chairman: MAJOR G. B. HORRIDGE, T.D.

Vice-Chairman: W. H. ALLEN

Directors: O. H. AUSTIN, AID. S. LORD,
K. R. SANDIFORD, J.P., F. TAYLOR

Team Manager: R. STOKOE

Secretary: T. SPENCER, F.C.I.S., J.P.

Ground and Registered Office:

GIGG LANE • BURY • Telephone: 4881/2

BURY

FOOTBALL CLUB CO. LTD.

SELF DRIVE CAR HIRE

1963/64 SALOONS

Austin 7. Austin A40. Morris 1100
Vauxhall Victor. Hillman Minx 1600
Ford Anglia. Cortina. Zephyr 4.

6p.m.—9a.m. from £1/10 24 hrs. from £2/10

9a.m.—6p.m. from £2 Weekly from £10/10

● ALL OUR 500 CARS ARE 1963/64 MODELS ●

FOR IMMEDIATE TARIFF APPLY TO
Mr. R. SCOTT — BURY 1581-2-3

CLIFF HOLDEN OF BURY

ALSO AT :

PETER STREET MANCHESTER

Telephone: BLACKfriars 7790

CHURCHGATE . BOLTON

Telephone: BOLTON 24446

WEST END GARAGE . BLACKBURN

Telephone: BLACKBURN 5832

SAM FLETCHER

The Man's Shop

BURY

Tel. 1032

PAINT and
WALLPAPER
STOCKISTS

**FENTON BROS.
& TARPEY LTD.**

KAY
GARDENS

Tel. BURy 4464



For Heating and Drying, Hire—

The Calor Gas COMET

Up to 350,000 B.T.U.s

Tyson's' of Bury

For all Calor Gas Supplies

48-50 Walmersley Road, Bury

Telephone: BURy 4935/6

The Savoy Cafe

M. PRESTON LTD.

*High Class Confectionery
Of Every Description .*

Specialists in Outside Catering

WEDDINGS PARTIES DINNERS

HOT or COLD MEALS supplied

Telephone Bury 4742

93 The Rock . Bury

ALLENS THE CLEANERS

BURY v SWINDON TOWN

TUESDAY, 18th FEBRUARY, 1964

GIGG LANE GLEANINGS

OUR meetings together seem to be rare occurrences these days, but very soon we will be seeing more of each other as we catch up with our fixtures. For of our last fifteen matches nine of them will be played at Gigg Lane, and if we have good reason to be concerned about our lowly position in the Second Division table the fact that we have so many games to play at home is an encouragement. Not that our Gigg Lane record is over encouraging, but we are confident that in the next ten weeks the record will be improved. Indeed, it has to be improved !

* * * * *

From our last two away matches we collected but one point but our partial success at Maine Road last Saturday was encouraging. First, our defeat at Plymouth. It was not until the closing minutes that the Argyle got the winner in a three-goal match ; the game could so easily have gone in our favour. But, of course until we begin to get a few more goals we will have to endure these odd-goal reverses. Goals and still more goals, is the plea that must echo round Gigg Lane. With them we could do wonders ; without them the struggle will persist.

* * * * *

Another goal at Maine Road would have brought in an extra precious point. Our boys had two scoring chances before Manchester City got the equaliser but unfortunately they were not taken. "Unfortunately" is the right word for we will need every point to help us move away from the danger positions in the Second Division table. There were phases in the match which were encouraging, even if it has to be agreed the pattern of the play was not so good as expected. We will have to do a lot better but there were movements which suggested that brighter things are round the corner. We hope the signs are fulfilled. We think they might be.

* * * * *

It was pleasing to have back in the side Brian Turner after his troublesome groin injury, although he is now again out of action with a leg injury and so is Brian Eastham. It is also good to see that George Jones was none the worse for the leg injury he received in the Cup game at Barnsley and which kept him out of the side at Plymouth. The game marked the first appearance in the League side of Colin Bell, our 17 year inside forward who had the happy experience of scoring on his debut. It was a neatly taken goal, and this County Durham youngster could well be pleased with his performance. He is one of the several very promising teen-agers on our books, and the sooner he earns a regular place in the first-team the better we will like it.

* * * * *

Our club policy towards the youngsters is clearly defined. If they are good enough and strong enough to hold their own in the rough and tumble of League football they will be given their chance. And if they persuade the officials they are able to lift the side out of trouble they will be kept in it. No supporter should be under any misapprehension. The team fielded is the one considered to be the strongest available, but every possible factor is closely considered before the line-up is announced.

RIBBLE
COACH EXCURSIONS
From Bury Market Ground

PLEASE CONSULT US FOR PARTY TRAVEL
ARRANGEMENTS TO
FOOTBALL MATCHES, THEATRES, etc.

PRIVATE PARTIES . LUXURY COACHES AVAILABLE
FOR HIRE . QUOTATIONS WITHOUT OBLIGATION

Full Details at Local Offices

BURY MILLETT STREET, Phone 4956
" MARKET PLACE, Phone 2910

Or at Local Agencies

JOHN KAY & SONS
(ROOFING) LTD.
THE WYLDE . BURY

Established 1855 Telephone Bury 4720

Slating, Tiling, Asbestos Sheeting and
General Roof Repairs.

LARGE STOCKS OF ALL ROOFING
MATERIALS ALWAYS AVAILABLE
at depot

Phoenix Street, off Bolton Street, Bury

TWO FAVOURITES
with the sports fans!
BURY TIMES
WEDNESDAY & SATURDAY

- * Full match reports
 - * Latest team news
 - * Junior League results
- And all Bury & District News!**

WIN, LOSE or DRAW
YOU'RE ON A—
SURE WINNER
IF YOU VISIT THE

Art Cinema Cafe

For your meal before and after the match
Buses from Gigg Lane stop at the door

Visiting Parties Specially Catered For

FILL UP WITH YOUR
FAVOURITE
Dutton's
BEER *



*
LIGHT
BROWN
PALE ALE
SPECIAL
B.B.L.

For You Madam!
Beautility at its Best

Hair & Beauty Salon

Hairstyling
Beauty Treatment
Physiotherapy

First Floor
10 Manchester Road
BURY

Tel. BURy 3074

J. A. CLIFF

Wholesale and Retail Tobacconist

17 HAYMARKET STREET, BURY
and
34 PRINCESS STREET, BURY

Bury Agent—

RIBBLE MOTOR SERVICES LTD.
TRAVEL BY RIBBLE

Telephone 4829

GRASS SEED and FERTILISERS
for the maintenance of the
famous GIGG LANE TURF
are supplied by

Rigby Taylor Ltd.

*Fertiliser manufacturers and experts
in Turf Maintenance*

VICTORIA WORKS, BOLTON

Tel. 23956

LEAGUE APPEARANCES AND GOAL SCORERS

SECOND DIVISION

Name	Appear- ances	Goals
HARKER	27	—
GALLAGHER	22	—
EASTHAM	26	—
TURNER	26	—
STOKOE	10	—
ATHERTON	27	2
MAYERS	10	3
JONES	25	8
CALDER	17	8
BEAUMONT	13	2
BARTLEY	20	2
MORRIN	2	—
ALSTON	22	5
THRELFALL	6	—
DURRANT	8	4
LEECH	2	—
BUNNER	11	—
GRIFFIN	4	—
COLQUHOUN	3	—
BROOKS	1	—
CLAXTON	5	—
SIMPSON	4	—
YARD	5	1
BELL	1	1

CENTRAL LEAGUE

Name	Appear- ances	Goals
KNOWLES	29	—
THRELFALL	19	—
ROBERTSON	12	—
LEECH	22	2
COLQUHOUN	25	1
MORRIN	26	1
CLAXTON	23	—
GRIFFIN	18	2
ALSTON	6	3
BELL	20	4
DURRANT	19	—
BUNNER	14	—
BROOKS	14	3
GALLAGHER	5	—
PARFITT	8	—
BEARDALL	1	—
BEAUMONT	13	3
BARTLEY	6	2
SIMPSON	15	2
BROWN	4	—
BAIN	8	—
ROBERTS	7	—
MAYERS	4	4
JONES	1	1
BRADSHAW	5	—
N. RAMSBOTTOM	2	—
G. BUTTERFIELD	6	—
RAWLINGSON	4	1
ROYLE	1	1
OPPONENTS	—	3

BURY

White Shirts

Blue Shorts

		PILKINGTON 11
	ATHERTON 6	
THRELFALL 3		YARD 10
HARKER 1	BUNNER 5	JONES 9
CALLAGHER 2		BELL 8
	LEECH 4	
		ALSTON 7

Referee: J. E. THACKER (Scarborough).

Pen Pictures of 1

TONIGHT we warmly welcome Swindon Town, promoted last season from the Third Division and one of the most successful sides in the Second Division. Indeed, they led the way for many weeks, but then they fell away and have lost so much ground they are not likely to finish in the top four. We had hoped to welcome this Wiltshire side as one of the last eight in the F.A. Cup, but on Saturday they were beaten at home by the very strong West Ham United after putting up a great fight. So whatever happens now Mr. Bert Head's side has made a memorable return to senior football. We have watched with great interest the progress of our former assistant manager since he left us to go to Swindon, and are happy that he has been so successful.

(Goalkeeper) MIKE TURNER—He joined the club whilst still in the R.A.F. from Dorchester Town. Took over in goal following the injury to O'Hara last season and has made the position his own. A really good goalkeeper.

(Right back) TERRY WOLLEN—Another local boy who made his debut for the first team when 16 years old. He played the majority of first team games during season 1960-61 and last season. Out with injury during latter half of last season.

(Left back) JOHN TROLLOPE—A local boy who joined the Swindon ground staff from school. Was selected for the first team at the beginning of season 1960-61 when he was 16 years old and was ever present during that season and last season. Maximum appearances in the League side during 1962-63.

(Right half) KEITH MORGAN—Team captain. A stong attacking wing half who joined Swindon as a youth from Westbury. Played in every first team game during 1960-61 season and missed only three games last year through injury. Made maximum appearances during 1962-63.

Red Shirts
White Shorts

SWINDON TOWN

7 SUMMERBEE

4 MORGAN

8 ATKINS

2 WOLLEN

9 STEVENS

5 McPHERSON

1 TURNER

10 DARCY

3 TROLLOPE

6 WOODRUFF

11 ROGERS

Linesmen: F. D. N. Nicholls (Red Flag) and H. Thompson (Yellow Flag).

To-night's Visitors

(Centre-half) KEN McPHERSON—Signed from Newport County in August, 1961, he is a player who is always in the thick of the fray. Originally a centre-forward, he has proved he has the ability to take over in defence.

(Left half) BOB WOODRUFF—Another local born player who came to the Town direct from the Swindon schoolboys' team. Has played at centre-forward and inside-forward in the senior side and his performances have made him a target for several transfer offers.

(Outside right) MIKE SUMMERBEE—Born in Cheltenham, he is another product of the Swindon youth policy. Formerly played at centre-forward, but has now made the inside right berth his own. Another of the players wanted by several clubs.

(Inside right) BILL ATKINS—Joined Swindon from Aston Villa at the end of the 1958-59 season. A strong ball playing forward, he played several representative matches while in the army. He was demobbed midway through last season and quickly made the inside right position his own.

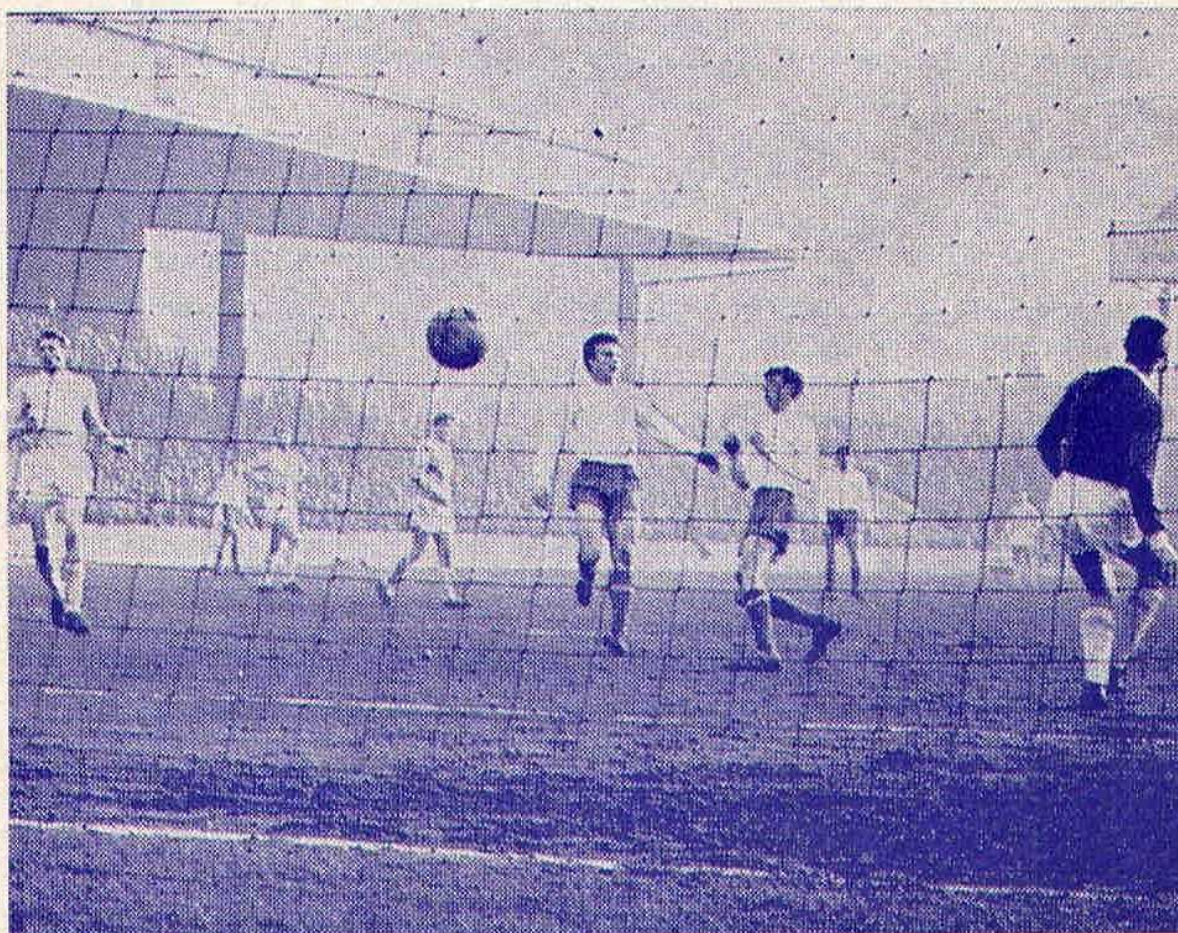
(Centre-forward) JOHN STEVENS—Was a member of the promotion side last season, scoring seven times in fourteen appearances. A lively, challenging leader.

(Inside left) ARNOLD DARCY—Joined the club in November, 1956, from Wigan Athletic. In spite of his lack of inches he is a strong forceful winger with a powerful shot.

(Outside left) DONALD ROGERS—Yet another of manager Bert Head's "finds." At 17 years of age is a winger of exceptional promise and is included in the England Youth party.

SECOND DIVISION

	Home						Away					
	P.	W.	D.	L.	F.	A.	W.	D.	L.	F.	A.	P.
Sunderland — — — — —	30	11	1	2	35	12	8	5	3	25	17	44
Leeds United — — — — —	30	8	7	0	23	10	8	5	2	26	14	44
Preston North End — — — — —	30	8	6	1	27	13	8	3	4	32	23	41
Charlton Athletic — — — — —	29	10	2	3	37	21	6	4	4	23	29	38
Southampton — — — — —	28	9	2	4	49	25	3	5	5	16	22	31
Newcastle United — — — — —	29	10	2	3	31	18	4	1	9	15	30	31
Swindon Town — — — — —	29	8	5	2	30	14	3	4	7	13	27	31
Northampton Town — — — — —	30	8	0	7	27	24	5	5	5	19	21	31
Middlesbrough — — — — —	29	11	2	2	37	9	1	4	9	18	29	30
Portsmouth — — — — —	30	5	6	4	33	26	6	2	7	27	27	30
Manchester City — — — — —	29	7	3	4	35	19	4	4	7	24	29	29
Rotherham United — — — — —	29	10	2	3	34	19	2	3	9	27	38	29
Derby County — — — — —	30	5	5	5	20	21	4	5	6	13	21	28
Norwich City — — — — —	29	7	4	4	33	24	2	5	7	19	32	27
Leyton Orient — — — — —	28	6	4	3	19	15	3	4	8	13	28	26
Swansea Town — — — — —	28	8	1	4	28	16	1	5	9	14	33	24
Huddersfield Town — — — — —	28	7	4	3	23	15	1	3	10	14	30	23
Cardiff City — — — — —	28	6	5	3	18	17	2	2	10	18	40	23
Grimsby Town — — — — —	30	4	6	5	22	24	1	6	8	10	32	22
Scunthorpe United — — — — —	29	5	6	4	22	20	2	1	11	14	39	21
Plymouth Argyle — — — — —	31	3	6	7	17	27	1	5	9	13	28	19
Bury — — — — —	27	3	4	5	21	19	3	2	10	15	33	18



Happy moment for Colin Bell (nearest goalkeeper) as he side-footed the ball past Dowd for a goal in his first League match against Manchester City at Maine Road.

**RADIO
TELEVISION
DOMESTIC APPLIANCES**

The people to see are

J. SMITH & SON

184 THE ROCK · BURY · Tel 1242

**SOLE AGENTS FOR
DYNATRON IN BURY**

For personal service



Olivers

Socket Screws Ltd.

**Specialist Distributors of
Socket Screws in High
Tensile and Stainless Steel.**

Phone:
LEYLAND
21202

Send for price list and advice
on applications.

MOUNT PLEASANT, LEYLAND, LANCS.

**HIGH CLASS
ORNAMENTAL GATES AND RAILINGS,
GRILLES FOR DOORS & WINDOWS,
STAIRCASE BALUSTRADES Etc.
ORNAMENTAL FITTINGS FOR SHOPS
AND SHOWROOMS.**

ESTIMATES FREE.

M. & S. WELDING CO.

PARADISE STREET · BURY

Telephone: BURY 4173.

BURY F.C. SUPPORTERS' CLUB

Agents Required

*Please contact Mr. G. Gifford
at the Trevelyan Club,
Broad Street, Bury.*

Space kindly donated by

**Messrs. Swintex Limited,
Manchester Road, Bury.**

Next Match at Gigg Lane

SECOND DIVISION

SATURDAY, 22nd February, 1964

BURY v CHARLTON ATHLETIC

Kick-off 3 p.m.

Headquarters: BURY AMATEUR FOOTBALL CLUB

DERBY HOTEL

First Class Commercial Hotel

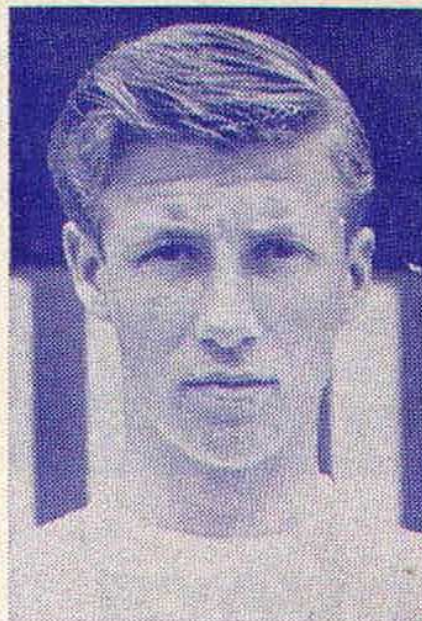
★ **MORNING COFFEE**

LUNCHEONS & DINNERS

MAGEE'S ALES A.A., R.A.C.

**CENTRE OF TOWN WITH
COMMERCIAL, COFFEE,
SMOKE AND PRIVATE ROOMS
WELL-APPOINTED BEDROOMS**

BURY Telephone: 4230



TOMMY CLAXTON and COLIN BELL, two of our young forwards who have both been given their chance with the senior side recently. They have found the test a big one, but we are confident they will soon be bidding for a regular place.

SECOND DIVISION

1963			F.	A.	GATE
Aug. 24	Rotherham United	H	4	2	8271
" 28	Norwich City	A	1	0	18819
" 31	Leeds United	A	0	3	26041
Sept. 3	Norwich City	H	4	2	10037
" 7	Sunderland	H	0	1	11901
" 11	Cardiff City	A	1	2	16081
" 13	Northampton Town	A	2	1	14886
" 17	Cardiff City	H	4	1	11918
" 21	Plymouth Argyle	H	2	2	8713
" 25	F.L. Cup—Gillingham	A	0	3	14979
" 28	Manchester City	H	1	1	18032
Oct. 5	Swindon Town	A	1	2	17811
" 8	Derby County	H	1	2	8137
" 12	Charlton Athletic	A	0	3	24522
" 16	F.L. Cup—3rd rd.				
" 19	Grimsby Town	H	1	1	6742
" 26	Huddersfield Town	A	1	2	9421
" 30	F.L. Cup—4th rd.				
Nov. 2	Leyton Orient	H	1	2	6239
" 9	Swansea Town	A	2	0	8693
" 16	(1) Southampton	H	P		
" 23	Middlesbrough	A	0	2	15604
" 27	F.L. Cup—5th rd.				
" 30	Newcastle United	H	1	2	8596
Dec. 7	(2) Preston N.E.	A	0	3	16374
" 14	Rotherham United	A	2	6	6578
" 21	Leeds United	H	1	2	7453
" 26	Portsmouth	H	P		
" 28	Portsmouth	A	3	3	15715
1964					
Jan. 4	(3) Yeovil Town	A	2	0	
" 11	Sunderland	A	1	4	36962
" 18	Northampton Town	H	1	1	6077
" 22	F.L. Cup S.F. 1st Leg				
" 25	(4) Barnsley	A	1	2	
Feb. 1	Plymouth Argyle	A	0	1	8473
" 5	F.L. Cup S.F. 2nd Leg				
" 8	Manchester City	A	1	1	14698
" 18	Swindon Town	H			
" 22	Charlton Athletic	H			
" 29	(6) Southampton	A			
Mar. 7	Huddersfield Town	H			
" 14	(S.F.) Derby County	A			
" 21	Swansea Town	H			
" 27	Scunthorpe United	A			
" 28	Grimsby Town	A			
" 31	Scunthorpe United	H			
April 4	Middlesbrough	H			
" 11	Newcastle United	A			
" 18	Preston N.E.	H			
" 25	Leyton Orient	A			
May 2	(F.A. Cup Final)				

CENTRAL LEAGUE

1963			F.	A.
Aug. 24	Aston Villa	A	1	1
" 27	Liverpool	H	0	0
" 30	Leeds United	H	2	1
Sept. 2	Liverpool	A	3	2
" 7	Wolverhampton W.	A	0	3
" 10	Barnsley	H	0	1
" 14	Stoke City	H	1	2
" 21	Bolton Wanderers	A	0	3
" 24	Barnsley	A	2	1
" 28	Manchester City	A	1	2
Oct. 1	Preston N.E.	A	0	1
" 4	Blackpool	H	1	2
" 11	Derby County	H	6	2
" 19	Huddersfield Town	A	2	0
" 26	Newcastle United	H	1	1
Nov. 2	West Bromwich A.	A	0	1
" 9	Everton	H	1	2
" 16	Sheffield Wednesday	A	1	1
" 23	Chesterfield	H	3	2
" 30	Burnley	A	0	0
Dec. 7	Manchester United	H	0	1
" 14	Aston Villa	H	0	3
" 21	Leeds United	A	0	0
" 26	Sheffield United	A	1	2
" 28	Sheffield United	H	0	1
1964				
Jan. 4				
" 11	Wolverhampton W.	H	1	1
" 18	Stoke City	A	0	4
" 25	Blackburn Rovers	H	2	0
Feb. 1	Bolton Wanderers	H	2	0
" 8	Manchester City	H	1	1
" 15	Blackpool	A	1	3
" 22	Derby County	A		
" 29	Huddersfield Town	H		
Mar. 7	Newcastle United	A		
" 14	West Bromwich A.	H		
" 21	Everton	A		
" 27				
" 28	Sheffield Wednesday	H		
" 30	Blackburn Rovers	A		
April 4	Chesterfield	A		
" 11	Burnley	H		
" 18	Manchester United	A		
" 25	Preston N.E.	H		
May 2	(F.A. Cup Final)			

These Fixtures are the copyright of The Football League Ltd., and are printed by their permission under Licence No. 2. They must not be reproduced in whole or in part without permission from The Football League Ltd.

Morris Decorations (Bury) Ltd.

*Interior Decorators
Painting Contractors*

Specialists in

**Executive Suites
General Business Premises
Industrial Colour Designs**

6 Haymarket Street Tel: 4264

JOPSON'S SNACK BAR Opposite Bus Station

*Where we cater for all
your requirements*

★ **QUICK SERVICE** our Speciality

*We also have a good selection of
Sweets, Chocolates and Cigarettes
of all leading firms.*

Thirsty?

Think

Of

THWAITES
THE BREWERS

**Obtainable at all
BURY BREWERY HOUSES**

WALMSLEYS

*One of the world's largest manufacturers of
Paper and Board Machinery*

Head Offices and Works : WALMSLEYS (Bury) LTD., BURY

PERSONAL SERVICE?

See

OF COURSE

Calverley's

**For your NEW T/V - RADIOGRAM - RECORD PLAYER - TAPE
RECORDER - RECORDS - LIGHT FITTINGS - WASHING MACHINES
OR VACUUM CLEANER ETC.**

11-13 Princess Street and 9 Silver Street, Bury.

Telephone : 5747/8/9

on Saturdays,
Bury fans
read

The
BURY

A Cordial Invitation is extended to all
Visiting Supporters for

Ready to wear SUITS, TOP COATS, RAINWEAR,
OUTFITTING, SHOES.

LADIES' FASHIONS, COATS, RAINWEAR, GOWNS,
FURS, CHILDREN'S SCHOOL WEAR

BURY'S LARGEST SHOP WITH THE PERSONAL SERVICE

Sydney Goldstone's
FASHION STORE Tel. 1707

18/20/22, BOLTON STREET, BURY

OPPOSITE ELECTRIC RAILWAY STATION

Printed by The Bury Times Co. Ltd., Cross Street, Bury.